

How to use Online Turf's 'Hydro-store' water saving crystals.

We are proud to say that we have taken proactive steps to counter the effects of water shortages and hosepipe watering restrictions on the survival and establishment of our turf in your garden. First, we have developed an especially drought-resistant sward to help cope with dry conditions and also we have taken the step of supplying your turf order with a pack of **Hydro-store** Water-storing polymer granules.

Hydro-store is the pioneering water-storing polymer, introduced nearly quarter of a century ago, to assist commercial growers and landscapers with the survival, establishment and growth of the widest range of plant material, including the laying of turf.

Hydro-store polymer granules can absorb hundreds of times their own weight of water, swelling up into hydrated 'gel' particles. When mixed with soil, (or any other planting or growing medium) *the polymer granules store rain or irrigation water right where it's needed -- at the roots*, creating thousands of tiny reservoirs within the growing medium, increasing the plant-available water holding capacity by significant amounts and dramatically reducing percolation and evaporation losses. Because the extra water is 'contained' in the polymer gel particles, the root environment does not become waterlogged. The physical presence of the gel also improves the structural properties of the soil and this assists root development as well as drainage of surplus water, beyond what the soil and the polymer together can hold for use by the roots. Plant roots grow right through the gel particles, from which they can extract over 95% of the stored water over an extended period of time as required by the sward. The polymer can absorb, store and release water an indefinite number of times over an active life of five years or more.

Dissolved nutrients can be absorbed into the polymer and extracted from it by plant roots unimpeded. This reduces nutrient leaching and increases efficiency of fertiliser usage by the lawn.

Conditions are thus created both for optimum survival, establishment and growth of newly laid turf and efficiency of water resource utilisation.

Properties and Benefits

Hydro-store can extend intervals between watering by treble and more.

Hydro-store alleviates moisture stress in new-laid turf and in growing-on.

Hydro-store cuts turf losses, improves establishment and growth.

Hydro-store can release over 95% of its stored water to roots, as required.

Hydro-store combats compaction, improves structure & aeration of soil.

Hydro-store reduces leaching of plant nutrients.

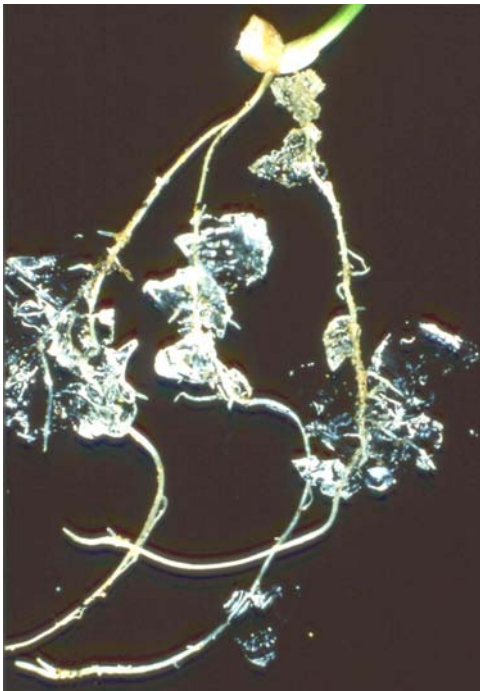
Hydro-store is very slow degrading and gives years of benefit.

Hydro-store reduces the rate of water loss by evaporation and percolation.

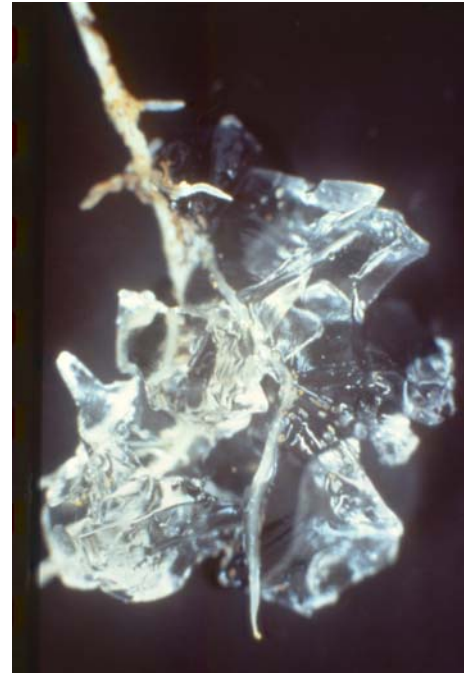
Hydro-store is neutral in pH, non-toxic and will not contaminate soil, groundwater or living organisms.

Hydro-store is safe and easy to use for all soil types.

Hydro-store working at the roots



Plant roots attach themselves to Hydro-store water-storing polymer, from which they can extract over 95% of the stored water as required.



Close-up shows roots actually growing right through water-charged fragments of P4 gel, enabling them to tap 1000's of reservoirs of stored water on demand.

How to use for best results

Hydro-store is a free flowing granular material and blends readily with soil or any growing medium. To provide its full benefit from the start of the growing cycle, 'Hydro-store' must be (1) uniformly mixed throughout the soil and (2) fully hydrated (charged with water). Wherever rainfall will not accomplish this it can best be achieved by irrigating well initially and one or 2 hours later (during which time the polymer will be hydrating) irrigate again to ensure that both the polymer and the surrounding soil are adequately charged with water.

New turfing:

At the time of preparing the soil, prior to laying the turf, apply 20 grams (equivalent to 4 heaped teaspoonsful) per square metre and cultivate it into the top 5 cms (2 inches), ensuring even distribution to the full area and the full depth. A border rake will be a suitable tool for this job. Lay the turf & irrigate as described above. Over a period of a few days the roots will quickly grow into the water-charged gel, ensuring rapid development of a strong, robust root system, and reducing the frequency and amount of irrigation water required to ensure survival in dry conditions.